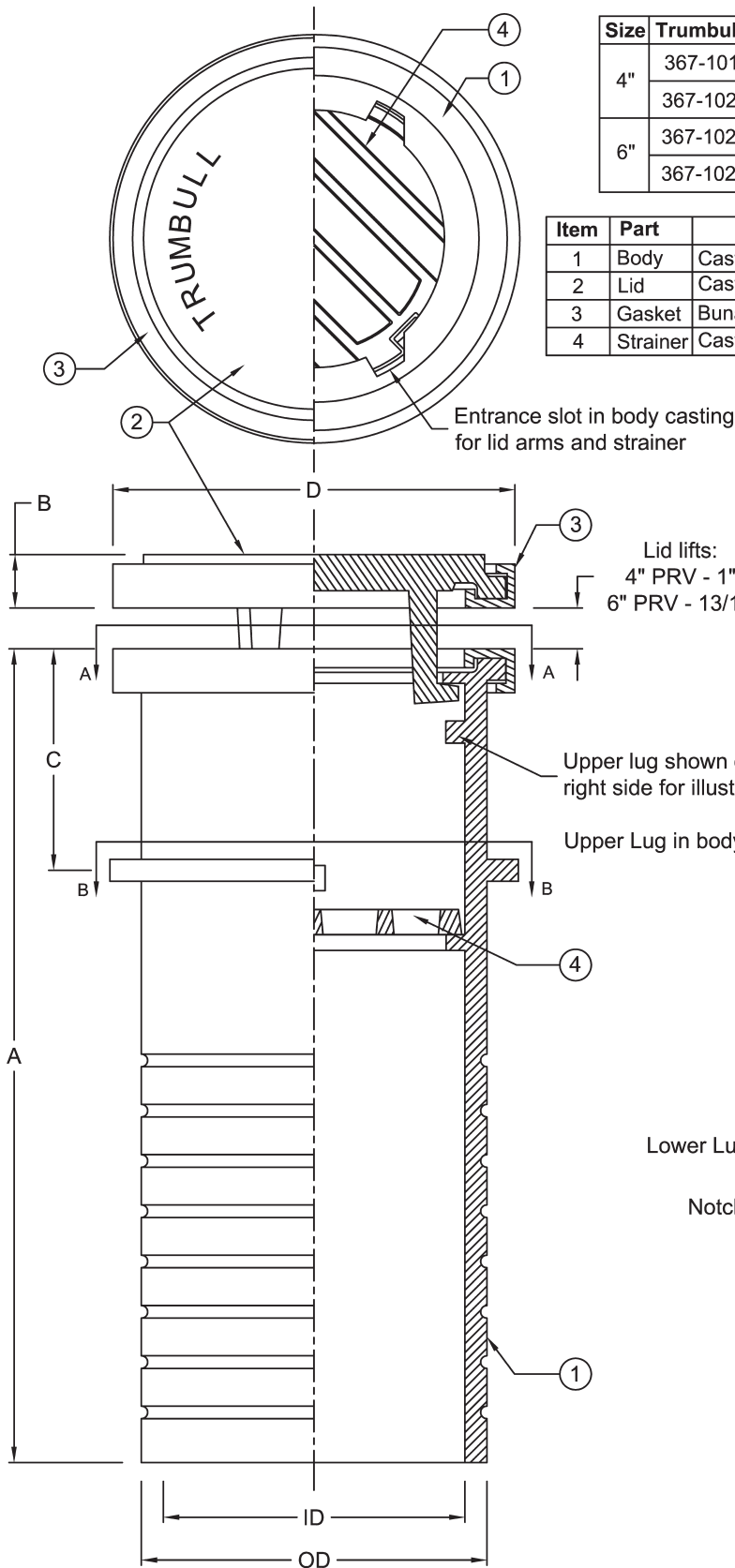


Right side of top view is shown without lid and seals

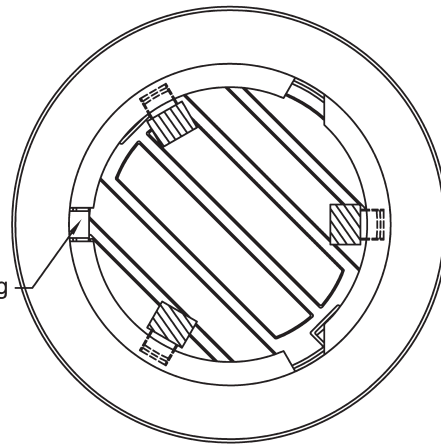
Floor Type, Pressure Relief Valve

Size	Trumbull #	A	B	C	D	ID	OD	Weight
4"	367-1010	16 $\frac{3}{16}$ "	7 $\frac{7}{8}$ "	4 $\frac{7}{32}$ "	6"	4 $\frac{1}{8}$ "	5"	32#
	367-1020	24 $\frac{3}{16}$ "						45#
6"	367-1021	16 $\frac{3}{16}$ "	1 $\frac{1}{8}$ "	4 $\frac{7}{16}$ "	8"	6"	6 $\frac{7}{8}$ "	51#
	367-1022	24 $\frac{3}{16}$ "						71#

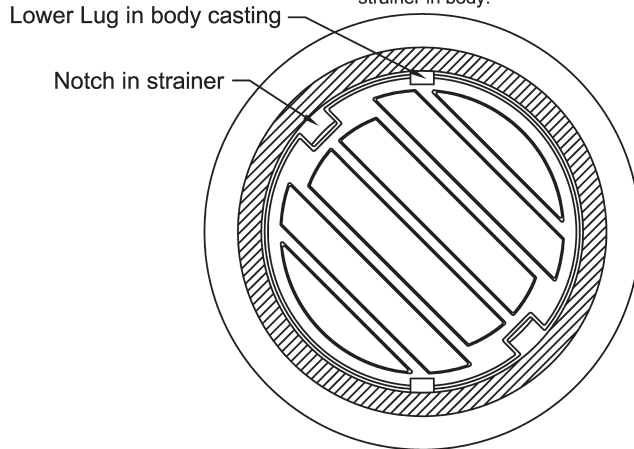
Item	Part	Material	Finish
1	Body	Cast Iron, Grey, ASTM A126(B), UNS F12102	NSF 61 Paint
2	Lid	Cast Iron, Grey, ASTM A126(B), UNS F12102	NSF 61 Paint
3	Gasket	Buna-N, 40 Durometer	-----
4	Strainer	Cast Iron, Grey, ASTM A126(B), UNS F12102	NSF 61 Paint



Section A-A
 Insert lid arms through entrance slots in body casting, then rotate to clear upper lug. The upper lug in body casting restricts the lid arms from aligning with entrance slots once the lid is installed. This prevents backpressure from lifting lid free of body.



Section B-B
 Insert strainer through entrance slots in body casting, slide the notches past the lower lugs, then rotate strainer. The lower lugs retain the strainer in body.



Drawn:	Drawing Revision:	
Date	Rev.	Date
8/31/95	G	4/21/08

TRUMBULL INDUSTRIES
 P.O. Box 1556
 1040 N. Meridian Rd.
 Youngstown, Ohio 44501

Drawn to Scale
TANK PRESSURE RELIEF VALVE
FLOOR TYPE