

# 600 Series

## Brass Ball Valves

A full range of economical brass ball valves intended for your common fluid control applications. Available in standard and full port threaded, full port solder end, and full port threaded end direct mount.

- 100% electronically tested in the open and closed position at 80 psi
- **666RTTS Series** – Standard port threaded end in sizes ranging from 1/2" through 2" (p 2)
- **666FTTS Series** – Full port threaded end in sizes ranging from 1/4" through 4" (p 3)
- **666FTTW Series** – Full port solder end in sizes ranging from 1/2" through 3" (p 4)
- **667FTTS-DM Series** – Full port, threaded end direct mount in sizes ranging from 1/4" through 4" (pp 5-8)
- **667FTTS Series** – Full port, threaded end safety vent in sizes ranging from 1/4" through 1" (p 9)
- **Other** – Information pertaining to our full line of Brass Ball Valves (p 10)



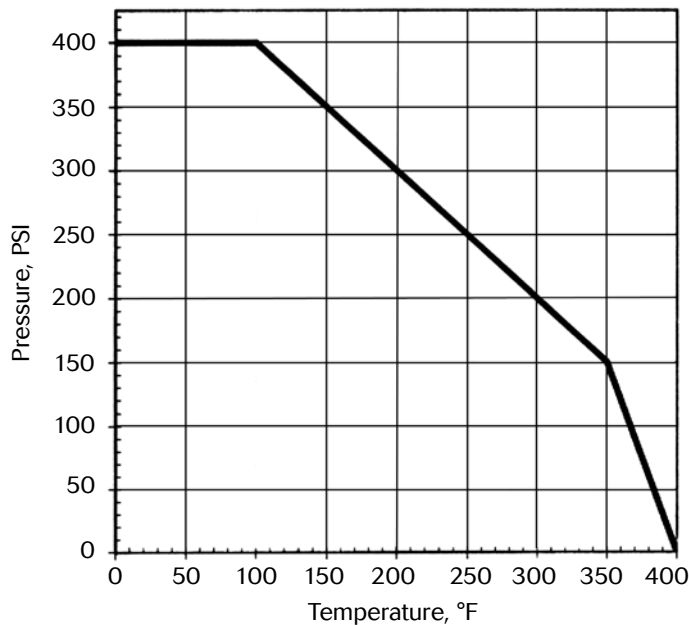
# Marwin Valve 666RTTS Standard Port Brass Ball Valve – Threaded Ends



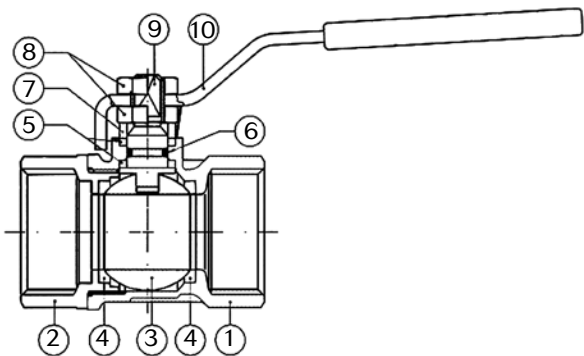
666RTTS

- Brass ball valve – intended for general service applications
- Standard port in sizes 1/2" through 2"
- Pressure rating 400 psig wog
- 125 psi steam
- Blow-out proof stem
- Chrome plated brass ball – self-cleaning during opening and closing
- PTFE seats, seals and thrust washer
- Agency approvals: CE/PED for those sizes where required; CSA, CRN

## Pressure-Temperature Chart



## Material Specifications

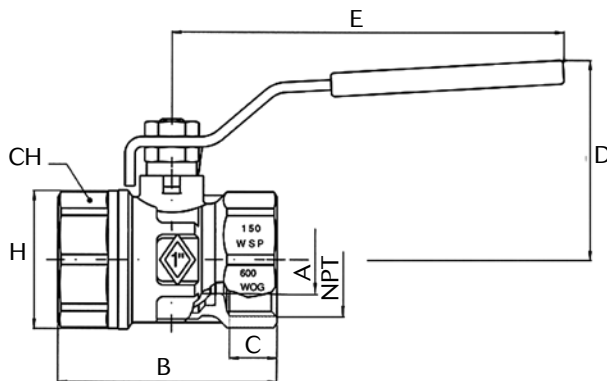


Part No.	Part Name	Material	No.
1	Body	*Brass CuZn40Pb2	1
2	End Connection	*Brass CuZn40Pb2	1
3	Ball	*Brass CuZn40Pb2 Cr. Plated	1
4	Seal Material	Virgin PTFE	2
5	Stem Seals	Virgin PTFE	2
6	O-Ring	NBR 75 Sh A	1
7	Packing Gland	*Brass CuZn40Pb2	1
8	Nut	Plated Steel	2
9	Stem	*Brass CuZn39Pb3	1
10	Lever Handle	Plated Steel	1

\*UNI EN 12165 CW617N (58Cu-40Zn-2Pb) equivalent to Hot Forging Brass UNS C37700 (60Cu-39Zn-2Pb).

\*\*UNI EN12164 CW614N (58Cu-39Zn-3Pb) equivalent to Architectural Brass bar UNS C38500 (57Cu-40Zn-3Pb)

## Dimensions



Size	A	H	CH	C	B	D	E	Cv (Kv)	Lbs (Kgs)
1/2" DN15	0.47 (12)	1.08 (28)	0.98 (25)	0.53 (14)	2.30 (58)	1.81 (46)	3.86 (98)	8.5 (7)	0.7 (0,3)
3/4" DN20	0.59 (15)	1.13 (34)	1.22 (31)	0.55 (14)	2.70 (69)	1.93 (49)	3.86 (98)	12.8 (11)	0.8 (0,4)
1" DN25	0.79 (20)	1.61 (41)	1.50 (38)	0.66 (17)	2.93 (75)	2.32 (59)	4.80 (122)	30.0 (26)	1.1 (0,5)
1-1/4" DN32	0.98 (25)	2.05 (52)	1.89 (48)	0.68 (17)	3.07 (78)	2.48 (63)	4.80 (122)	41.7 (36)	1.5 (0,7)
1-1/2" DN40	1.26 (32)	2.32 (59)	2.13 (54)	0.68 (17)	3.35 (85)	3.07 (78)	6.02 (153)	82.3 (71)	2.2 (1,0)
2" DN50	1.57 (40)	2.87 (73)	2.64 (67)	0.68 (17)	3.88 (98)	3.35 (85)	6.02 (153)	125.5 (108)	3.1 (1,4)

# Marwin Valve

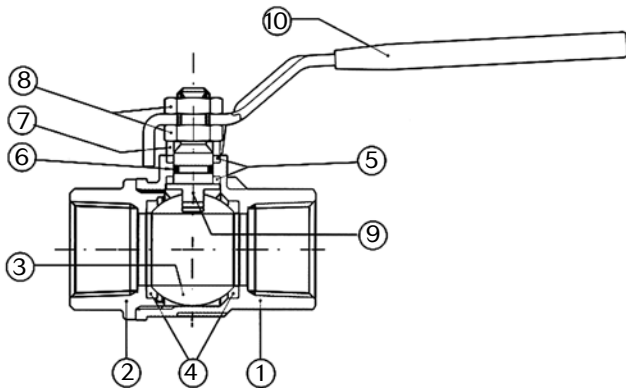
## 666FTTS Full Port Brass Ball Valve – Threaded Ends



666FTTS

- Brass ball valve – intended for general service applications
- Full port in sizes 1/4" through 4"
- Pressure rating 600 psig wog
- 125 psi steam
- Blow-out proof stem
- Chrome plated brass ball
- PTFE seats, seals and thrust washer
- High flow capacity from full port
- Agency approvals: CE/PED for those sizes where required; FM, UL, CSA, CRN

### Material Specifications

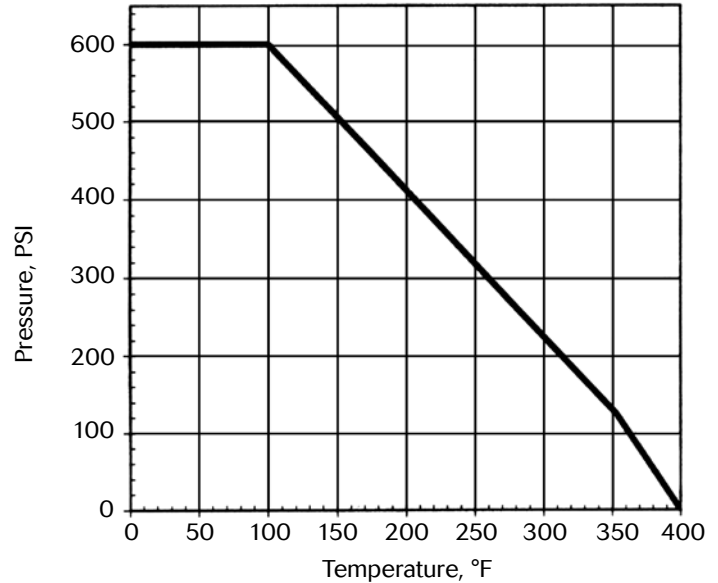


Part No.	Part Name	Material	No.
1	Body	*Brass CuZn40Pb2	1
2	End Connection	*Brass CuZn40Pb2	1
3	Ball	*Brass CuZn40Pb2 Cr. Plated	1
4	Seal Material	Virgin PTFE	2
5	Stem Seals	Virgin PTFE	2
6	O-Ring	NBR 75 Sh A	1
7	Packing Gland	*Brass CuZn40Pb2	1
8	Nut	Plated Steel	2
9	Stem	*Brass CuZn39Pb3	1
10	Lever Handle	Plated Steel	1

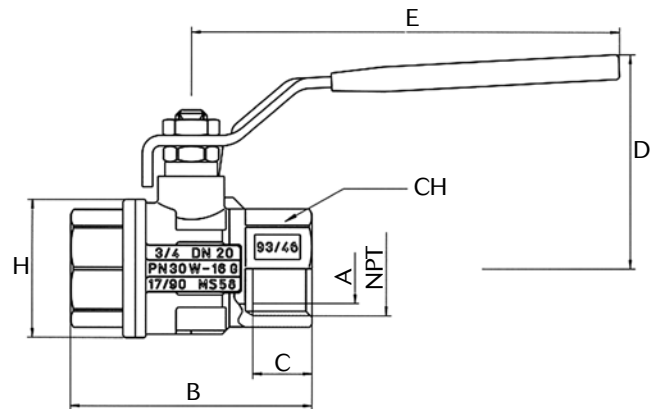
\*UNI EN 12165 CW617N (58Cu-40Zn-2Pb) equivalent to Hot Forging Brass UNS C37700 (60Cu-39Zn-2Pb).

\*\*UNI EN12164 CW614N (58Cu-39Zn-3Pb) equivalent to Architectural Brass bar UNS C38500 (57Cu-40Zn-3Pb)

### Pressure-Temperature Chart



### Dimensions



Size	A	H	CH	C	B	D	E	Cv (Kv)	Lbs (Kgs)
1/4"	0.39	0.90	0.78	0.39	2.02	1.75	3.85	6.3	0.3
DN8	(10)	(23)	(20)	(10)	(52)	(45)	(98)	(5)	(0.1)
3/8"	0.39	0.90	0.78	0.40	2.02	1.75	3.85	7.0	0.3
DN10	(10)	(23)	(20)	(10)	(52)	(45)	(98)	(6)	(0.1)
1/2"	0.59	1.25	0.98	0.53	2.44	1.88	3.85	19.0	0.4
DN15	(15)	(32)	(25)	(14)	(62)	(48)	(98)	(16)	(0.2)
3/4"	0.78	1.53	1.22	0.55	2.71	2.28	4.80	34.4	0.7
DN20	(20)	(39)	(31)	(14)	(69)	(58)	(122)	(30)	(0.3)
1"	0.98	1.92	1.49	0.66	3.07	2.44	4.80	50.2	1.1
DN25	(25)	(49)	(38)	(17)	(78)	(62)	(122)	(43)	(0.5)
1-1/4"	1.25	2.32	1.88	0.68	3.42	3.07	6.02	103.7	2.0
DN32	(32)	(59)	(48)	(17)	(87)	(78)	(153)	(89)	(0.9)
1-1/2"	1.57	2.87	2.12	0.68	3.89	3.34	6.02	268.4	3.1
DN40	(40)	(73)	(54)	(17)	(99)	(85)	(153)	(230)	(1.4)
2"	1.96	3.38	2.63	0.69	4.33	3.79	6.37	309.2	4.2
DN50	(50)	(86)	(67)	(18)	(110)	(97)	(162)	(265)	(1.9)
2-1/2"	2.56	4.37	3.54	1.19	5.59	5.02	8.07	629.0	8.0
DN65	(62)	(111)	(90)	(30)	(142)	(128)	(205)	(540)	(3.7)
3"	3.15	5.35	4.13	1.31	6.65	5.45	8.07	1018	12.9
DN80	(80)	(136)	(105)	(33)	(164)	(139)	(205)	(873)	(5.9)
4"	3.94	6.35	5.12	1.55	7.60	6.34	10.23	1622	22.0
DN100	(100)	(166)	(130)	(39)	(193)	(161)	(260)	(1390)	(10.0)

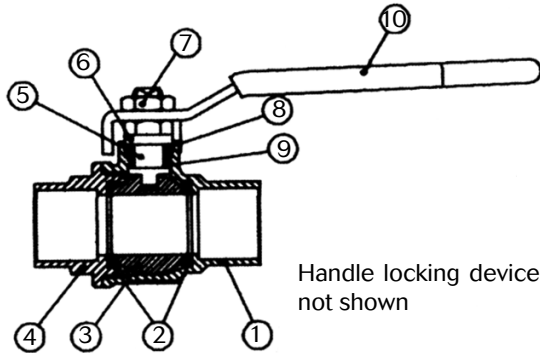
# Marwin Valve 666FTTW Full Port Brass Ball Valve – Solder Ends



666FTTW

- Brass ball valve
- Full port in sizes 1/2" through 3"
- Solder ends for copper tubing. Designed to be soft soldered into copper tubing lines without disassembly using solders with melting points not exceeding 500°F (260°C). High temperature solders will damage the seat material.
- Pressure rating 600 psi wog
- Blow-out proof stem
- Chrome plated brass ball TFE seats, seals and thrust washer
- PTFE Seats, seals and thrust washer
- Locking device

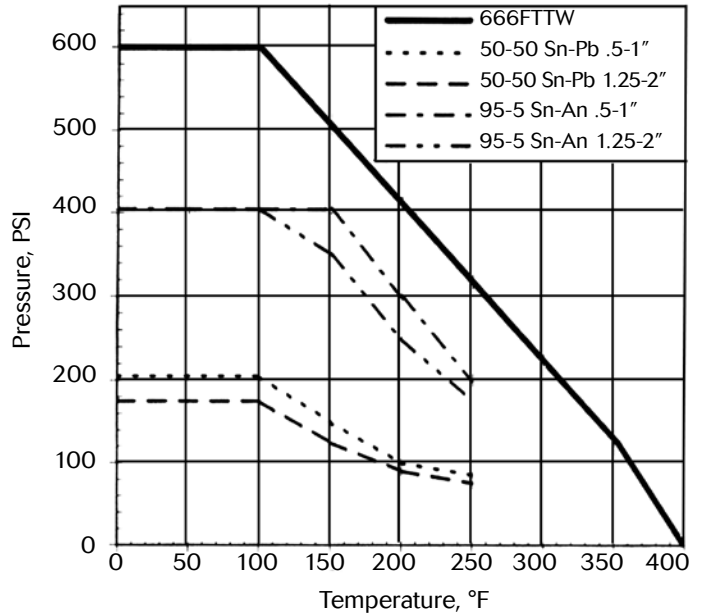
## Material Specifications



Handle locking device not shown

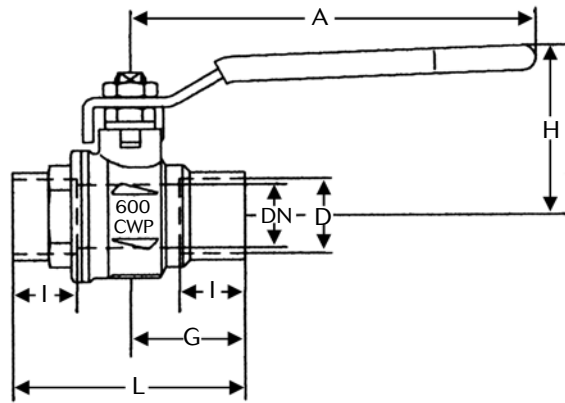
Part No.	Part Name	Material	No.
1	Body	Brass	1
2	Seat	PTFE	1
3	Ball	Brass, Cr Plated	1
4	End Cap	Brass	2
5	Stem	Brass, Ni Plated	2
6	Nut with washer	Brass	1
7	Dacrotized Nut	Steel, ASTM M1010, Dacrotized	1
8	Packing	PTFE	2
9	Thrust Washer	PTFE carbon filled 25	1
10	Handle	Steel, Plated	1

## Pressure-Temperature Chart



The valve working pressure is limited by the solder joint rating, also shown in the pressure-temperature chart.

## Dimensions



Size	D	DN	I	L	G	A	H	Cv (Kv)	Lbs (Kgs)
1/2" DN15	0.63 (16)	0.55 (14)	0.49 (12)	2.11 (54)	1.04 (26)	3.94 (100)	1.69 (43)	45 (39)	0.4 (0,2)
3/4" DN20	0.88 (22)	0.75 (19)	0.75 (19)	2.72 (69)	1.34 (34)	4.72 (120)	1.97 (50)	65 (56)	0.7 (0,3)
1" DN25	1.13 (29)	0.94 (24)	0.91 (23)	3.35 (85)	1.67 (42)	4.72 (120)	2.13 (54)	90 (78)	1.0 (0,4)
1-1/4" DN32	1.38 (35)	1.18 (30)	0.96 (24)	3.82 (97)	1.91 (48)	6.22 (158)	3.01 (76)	115 (91)	1.6 (0,7)
1-1/2" DN40	1.63 (41)	1.50 (38)	1.10 (28)	4.49 (114)	2.24 (57)	6.22 (158)	3.25 (82)	295 (254)	2.3 (1,0)
2" DN50	2.13 (54)	1.89 (48)	1.34 (34)	5.43 (138)	2.72 (69)	6.22 (158)	3.52 (89)	405 (349)	3.7 (1,7)
2-1/2" DN65	2.63 (67)	2.52 (64)	1.48 (37)	6.61 (168)	3.31 (84)	10.04 (255)	5.20 (132)	595 (513)	9.9 (4,5)
3" DN80	3.13 (80)	2.99 (76)	1.67 (42)	7.60 (193)	3.80 (97)	10.04 (255)	5.51 (140)	720 (621)	13.9 (6,3)

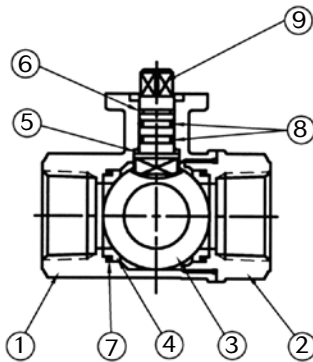
# Marwin Valve 666FTTS-DM Full Port Brass Ball Valve – Direct Mount



666FTTS-DM

- Brass ball valve
- Full port in sizes 1/4" through 4"
- Pressure rating 400 psig wog, 125 psi saturated steam
- Direct mounting eliminates actuator bracket, reducing the space required for automated systems
- Direct mounting eliminates misalignment between valve and actuator
- Ideally suited for air compression, waste water management and low pressure steam applications
- Agency approvals: CE/PED for those sizes where required; CRN

## Material Specifications

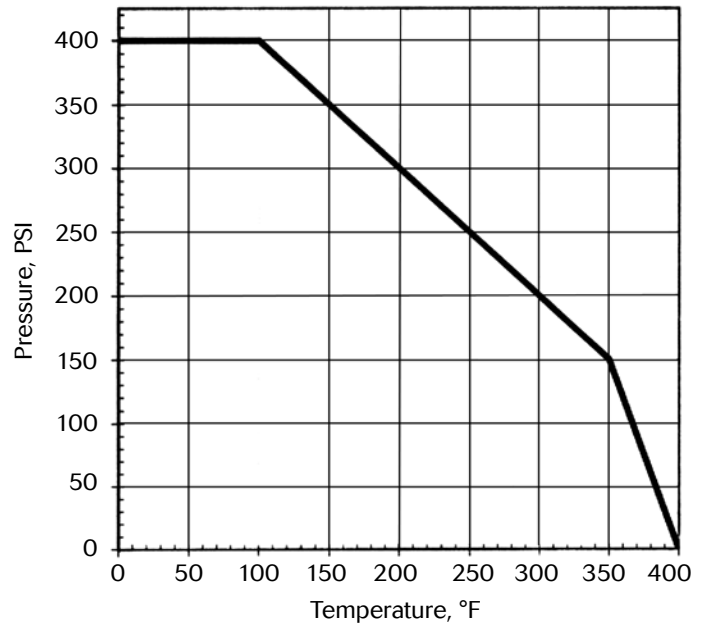


Part No.	Part Name	Material	No.
1	Body	*Brass CuZn40Pb2	1
2	End Cap	*Brass CuZn40Pb2	1
3	Ball	*Brass CuZn40Pb2 Cr. Plated	1
4	Seat	Virgin PTFE	2
5	Thrust Washer	Virgin PTFE	1
6	Bearing, Stem	Virgin PTFE	1
7	O-Ring, Seat	Viton	2
8	O-Ring, Stem	Viton	2
9	Stem	*Brass CuZn39Pb3	1

\*UNI EN 12165 CW617N (58Cu-40Zn-2Pb) equivalent to Hot Forging Brass UNS C37700 (60Cu-39Zn-2Pb).

\*\*UNI EN12164 CW614N (58Cu-39Zn-3Pb) equivalent to Architectural Brass bar UNS C38500 (57Cu-40Zn-3Pb)

## Pressure-Temperature Chart



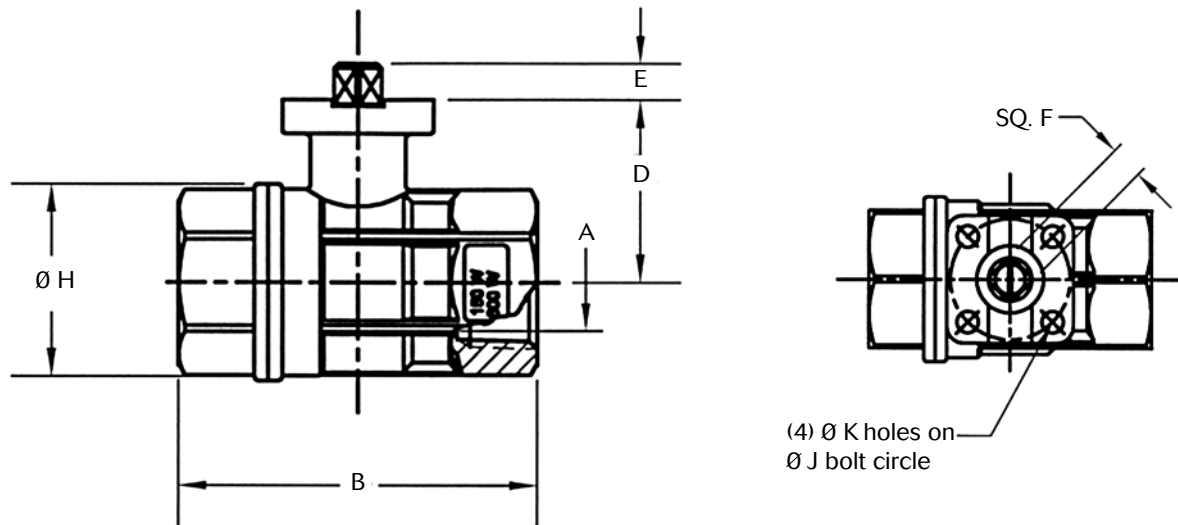
## Technical Specifications

Size	Flow Cv (Kv)	WOG PSI (BAR)	Weight, Lbs, Kgs
1/4"	6.3	600	0.82
DN8	(5,4)	(41,4)	(0,37)
3/8"	7.0	600	0.79
DN10	(6,0)	(41,4)	(0,36)
1/2"	19.0	600	0.66
DN15	(16,4)	(41,4)	(0,31)
3/4"	19.0	600	0.91
DN20	(16,4)	(41,4)	(0,41)
1"	34.5	600	1.55
DN25	(29,7)	(41,4)	(0,70)
1-1/4"	50.2	600	2.14
DN32	(43,3)	(41,4)	(0,97)
1-1/2"	268.4	600	3.71
DN40	(231,4)	(41,4)	(1,68)
2"	309.3	600	5.52
DN50	(266,6)	(41,4)	(2,50)
2-1/2"	629.5	600	8.83
DN65	(542,7)	(41,4)	(4,00)
3"	944.5	600	13.29
DN80	(814,2)	(41,4)	(6,03)
4"	1493	600	21.54
DN100	(1287)	(41,4)	(9,77)

# Marwin Valve

## 666FTTS-DM Full Port Brass Ball Valve – Direct Mount

### Dimensions

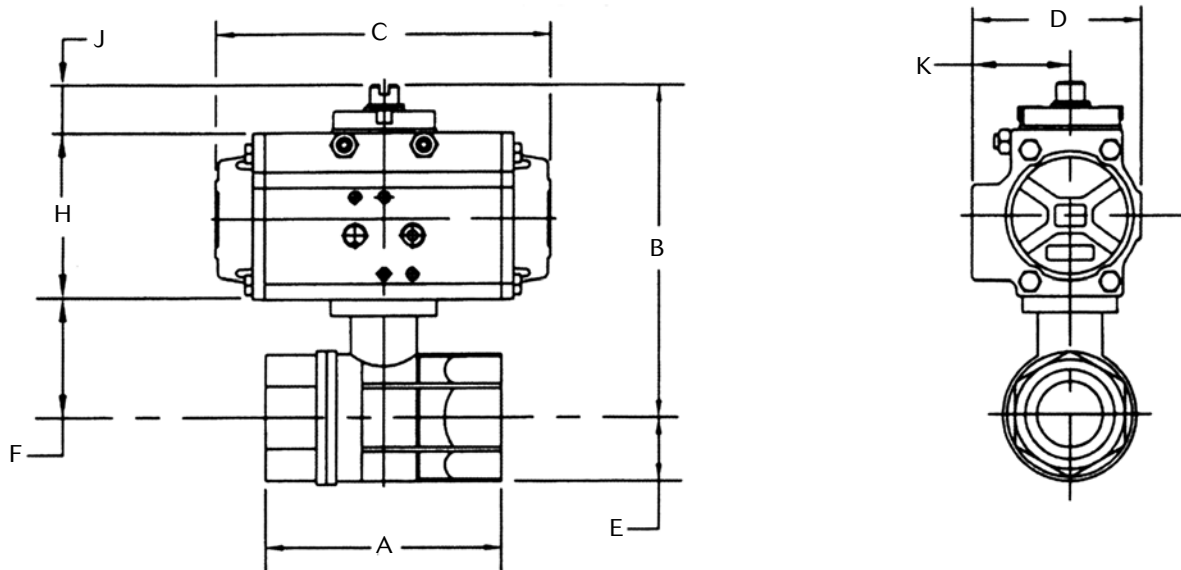


Size	A	B	D	E	F Sq.	ØH	ISO	J	K
1/4" DN8	0.39 (9,9)	2.64 (67,1)	1.28 (32,5)	0.35 (8,9)	0.350 (8,89)	1.32 (33,5)	F03	1.42 (26,1)	0.24 (6,1)
3/8" DN10	0.39 (9,9)	2.64 (67,1)	1.28 (32,5)	0.35 (8,9)	0.350 (8,89)	1.32 (33,5)	F03	1.42 (36,1)	0.24 (6,1)
1/2" DN15	0.56 (14,2)	2.64 (67,1)	1.28 (32,5)	0.35 (8,9)	0.350 (8,89)	1.32 (33,5)	F03	1.42 (36,1)	0.24 (6,1)
3/4" DN20	0.75 (19,1)	3.00 (76,2)	1.36 (34,5)	0.35 (8,9)	0.350 (8,89)	1.57 (39,9)	F03	1.42 (36,1)	0.24 (6,1)
1" DN25	0.95 (24,1)	3.35 (85,1)	1.79 (45,5)	0.35 (8,9)	0.350 (8,89)	1.93 (49,0)	F03	1.42 (36,1)	0.24 (6,1)
1-1/4" DN32	1.18 (30,0)	3.66 (93,0)	1.93 (49,0)	0.35 (8,9)	0.350 (8,89)	2.30 (58,4)	F03	1.42 (36,1)	0.24 (6,1)
1-1/2" DN40	1.49 (37,8)	4.13 (104,9)	2.52 (64,0)	0.43 (10,9)	0.430 (10,92)	2.87 (72,9)	F05	1.97 (50,0)	0.27 (6,9)
2" DN50	1.97 (50,0)	4.80 (121,9)	2.88 (73,2)	0.43 (10,9)	0.430 (10,92)	3.60 (91,4)	F05	1.97 (50,0)	0.27 (6,9)
2-1/2" DN65	2.52 (64,0)	6.10 (154,9)	3.48 (88,4)	0.59 (15,0)	0.550 (13,97)	4.51 (114,6)	F07	2.76 (70,1)	0.35 (8,9)
3" DN80	3.0 (76,2)	6.89 (175,0)	3.85 (97,8)	0.59 (15,0)	0.550 (13,97)	5.35 (135,9)	F07	2.76 (70,1)	0.35 (8,9)
4" DN100	3.74 (95,0)	8.03 (204,0)	4.59 (116,6)	0.69 (17,5)	0.670 (17,02)	6.53 (165,9)	F07	2.76 (70,1)	0.35 (8,9)

# Marwin Valve

## 666FTTS-DM Full Port Brass Ball Valve – Direct Mount

### Dimensions



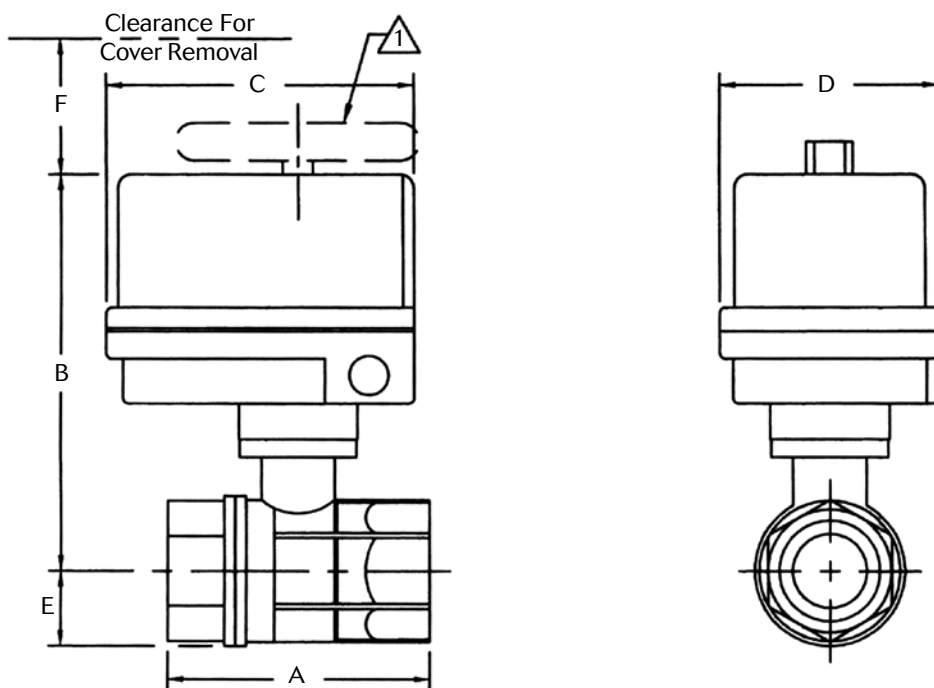
Size	Actuator	A	B	C	D	E	F	H	J	K	Weight lbs (kgs)
1/4" -1/2" DN8-15	UT-0A-DA	2.63 (66,8)	3.49 (88,7)	4.30 (109,2)	1.80 (45,7)	0.66 (16,8)	0.93 (23,6)	1.77 (45,0)	0.79 (20,1)	0.90 (22,9)	2.0 (0,9)
	UT-0-SR		4.46 (113,3)	5.50 (139,7)	2.80 (71,2)			2.74 (69,6)	0.79 (20,1)	1.60 (40,6)	3.5 (1,6)
3/4" DN20	UT-0A-DA	2.99 (76,0)	3.56 (90,4)	4.30 (109,2)	1.80 (45,7)	0.78 (19,8)	1.00 (25,4)	1.77 (45,0)	0.79 (20,1)	0.90 (22,9)	2.0 (0,9)
	UT-0-SR		4.53 (115,1)	5.50 (139,7)	2.80 (71,2)			2.74 (69,6)	0.79 (20,1)	1.60 (40,6)	3.5 (1,6)
1" DN25	UT-0A-DA	3.34 (84,8)	3.90 (99,1)	4.30 (109,2)	1.80 (45,7)	0.96 (24,4)	1.34 (34,0)	1.77 (45,0)	0.79 (20,1)	0.90 (22,9)	2.0 (0,9)
	UT-0-SR		4.87 (123,7)	5.50 (139,7)	2.80 (71,2)			2.74 (69,6)	0.79 (20,1)	1.60 (40,6)	4.5 (2,0)
1-1/4" DN32	UT-0A-DA	3.66 (93,0)	4.04 (102,6)	4.30 (109,2)	1.80 (45,7)	1.15 (29,2)	1.48 (37,6)	1.77 (45,0)	0.79 (20,1)	0.90 (22,9)	3.0 (1,4)
	UT-0-SR		5.01 (127,3)	5.50 (139,7)	2.80 (71,2)			2.74 (69,6)	0.79 (20,1)	1.60 (40,6)	4.5 (2,0)
1-1/2" DN40	UT-0-DA	4.13 (104,9)	5.51 (140,0)	5.50 (139,7)	2.80 (71,2)	0.14 (35,6)	1.98 (50,3)	2.74 (69,6)	0.79 (20,1)	1.60 (40,6)	5.6 (2,5)
	UT-2-SR		6.59 (167,4)	8.20 (208,3)	3.70 (94,0)			3.82 (97,0)	0.79 (20,1)	2.10 (53,3)	10.3 (4,7)
2" DN50	UT-0-DA	4.80 (121,9)	5.87 (149,1)	5.87 (149,1)	2.80 (71,2)	1.80 (45,7)	2.34 (59,4)	2.74 (69,6)	0.79 (20,1)	1.60 (40,6)	7.6 (3,4)
	UT-2-SR		6.95 (176,5)	6.95 (176,5)	3.70 (94,0)			3.82 (97,0)	0.79 (20,1)	2.10 (53,3)	12.3 (5,6)
2-1/2" DN65	UT-1-DA	6.10 (154,9)	6.71 (170,4)	6.40 (162,6)	3.20 (81,3)	2.22 (56,4)	2.75 (69,9)	3.17 (80,5)	0.79 (20,1)	1.80 (45,7)	11.5 (5,2)
	UT-3-SR		8.32 (211,3)	10.70 (271,8)	4.80 (121,9)			4.78 (121,4)	0.79 (20,1)	2.70 (68,6)	23.5 (10,7)
3" DN80	UT-1-DA	6.88 (174,8)	7.09 (180,1)	6.40 (162,6)	3.20 (81,3)	2.66 (67,6)	3.13 (79,5)	3.17 (80,5)	0.79 (20,1)	1.80 (45,7)	17.5 (7,9)
	UT-3-SR		8.70 (221,1)	10.70 (271,8)	4.80 (121,9)			4.78 (121,4)	0.79 (20,1)	2.70 (68,6)	28.5 (12,9)
4" DN100	UT-2.5-DA	8.04 (204,2)	8.92 (226,6)	9.40 (238,8)	4.20 (106,7)	3.26 (82,8)	3.86 (90,0)	4.27 (108,5)	0.79 (20,1)	2.30 (58,4)	24.9 (11,3)
	UT-3.5-SR		10.61 (269,5)	12.90 (327,7)	5.40 (137,2)			5.57 (141,5)	1.18 (30,0)	2.90 (73,7)	39.1 (17,7)

Note: Actuators sized for 80 psi actuator air supply pressure maximum valve differential pressure, and PTFE seats

# Marwin Valve

## 666FTTS-DM Full Port Brass Ball Valve – Direct Mount

### Dimensions



Size	Actuator	A	B	C	D	E	F	Weights lbs (kgs)
1/4"-1/2" DN8-15	ER-1-2-4	2.63 (66,8)	5.43 (137,9)	5.63 (143,0)	4.00 (101,6)	0.66 (16,76)	2.50 (63,5)	6.0 (2,7)
3/4" DN20	ER-1-2-4	2.99 (76,0)	5.50 (139,7)	5.63 (143,0)	4.00 (101,6)	0.78 (19,81)	2.50 (63,5)	6.0 (2,7)
1" DN25	ER-1-2-4	3.34 (84,8)	5.84 (148,3)	5.63 (143,0)	4.00 (101,6)	0.96 (24,38)	2.50 (63,5)	6.0 (2,7)
1-1/4" DN32	ER-1-2-4	3.66 (93,0)	5.90 (149,9)	5.63 (143,0)	4.00 (101,6)	1.15 (29,21)	2.50 (6,3)	7.0 (3,2)
1-1/2" DN40	ER-2-5-4	4.13 (104,9)	7.36 (186,9)	6.88 (174,8)	4.25 (108,0)	1.40 (35,56)	3.00 (76,2)	10.0 (4,5)
2" DN50	ER-2-5-4	4.80 (121,9)	7.72 (196,1)	6.88 (174,8)	4.25 (108,0)	1.80 (45,72)	3.00 (76,2)	12.0 (5,4)
2-1/2" DN65	ER-4-5-4	6.10 (154,9)	11.95 $\Delta$ (303,5)	7.00 (177,8)	7.00 (177,8)	2.22 (56,39)	4.00 (101,6)	23.0 (10,4)
3" DN80	ER-4-5-4	6.88 (174,8)	12.3 $\Delta$ (313,2)	7.00 (177,8)	7.00 (177,8)	2.66 (67,56)	4.00 (101,6)	27.0 (12,2)
4" DN100	ER-10-15-4 $\Delta$	8.04 (204,2)	10.6 (269,2)	7.00 (177,8)	7.00 (177,8)	3.26 (82,80)	4.00 (101,6)	27.5 (13,6)

$\Delta$  Manual over-ride handwheel provided only on actuators ER-10-15-4

$\Delta$  Includes 2.00" high bracket

Note: Actuators sized for 80 psi actuator air supply pressure maximum valve differential pressure, and PTFE seats

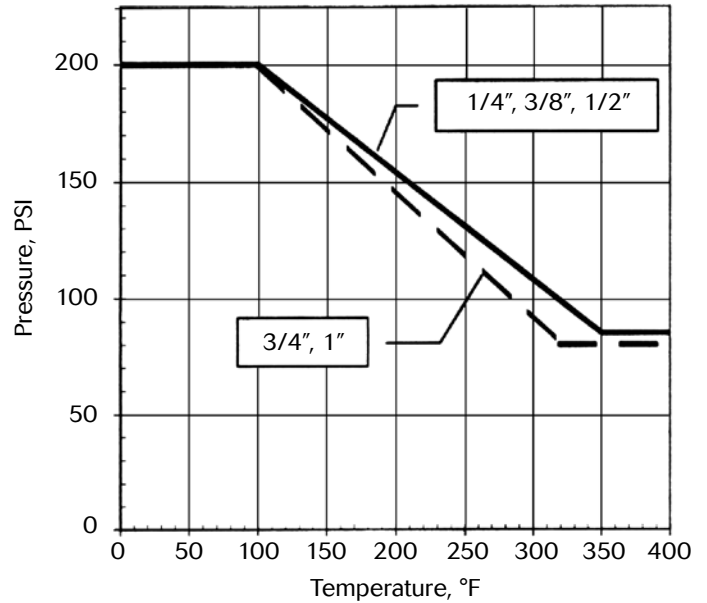
# Marwin Valve 667FTTS Full Port Brass Ball Valve – Safety Vent



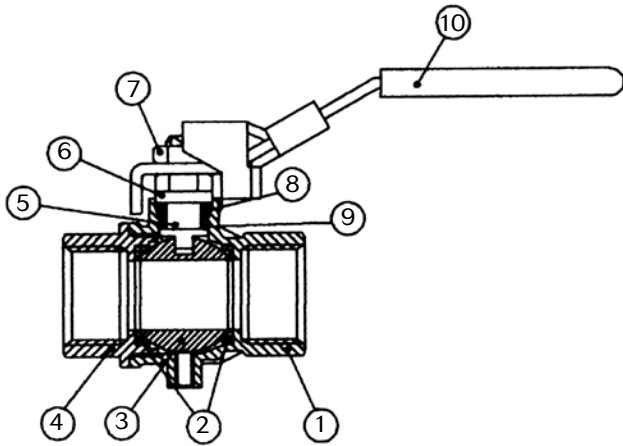
667FTTS

- Brass ball valve
- Full port in sizes 1/4" through 1"
- Safety vented ball for compressed air service
- Pressure rating 200 psi wog
- Blow-out proof stem
- Chrome-plated brass ball
- PTFE seats, seals and thrust washer
- Locking handle

## Pressure-Temperature Chart



## Material Specifications

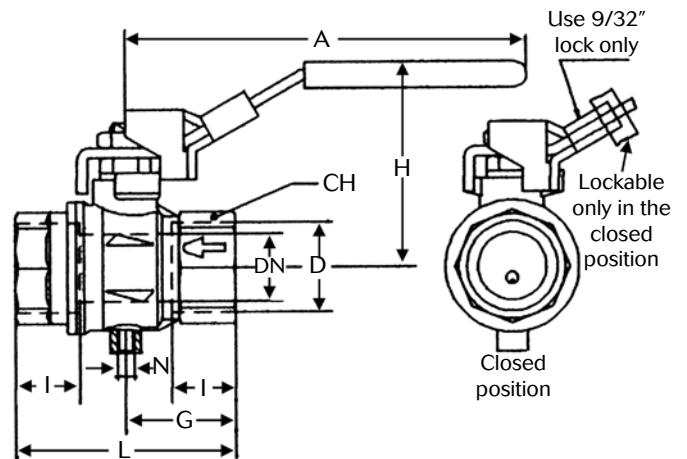


Part No.	Part Name	Material	No.
1	Body	*Brass CuZn40Pb2	1
2	Seat	PTFE	2
3	Ball	*Brass CuZn40Pb2 Cr. Plated	1
4	End Cap	*Brass CuZn40Pb2	1
5	Stem	*Brass CuZn39Pb3	1
6	Nut with Washer	*Brass CuZn39Pb3	1
7	Dacrotized Nut	Steel, ASTM M1010 Dacrotized	1
8	Packing	PTFE	1
9	Thrust Washer	PTFE carbon filled	1
10	Handle	Steel, Plated	1

\*UNI EN 12165 CW617N (58Cu-40Zn-2Pb) equivalent to Hot Forging Brass UNS C37700 (60Cu-39Zn-2Pb).

\*\*UNI EN 12164 CW614N (58Cu-39Zn-3Pb) equivalent to Architectural Brass bar UNS C38500 (57Cu-40Zn-3Pb)

## Dimensions

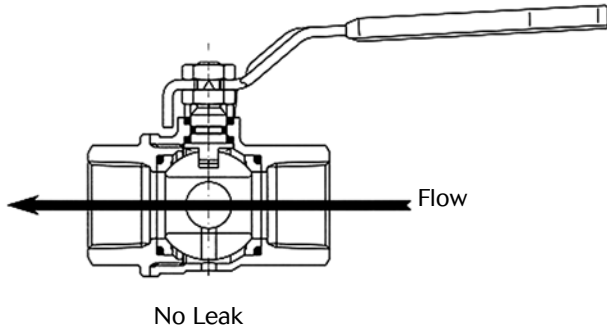


Size	DN	I	L	G	A	H	CH	N	Cv (Kv)	Lbs (Kgs)
1/4"	0.31	0.47	1.77	0.89	3.76	1.86	0.79	10-32 UNF	6.1	0.4
DN8	(8)	(12)	(45)	(22)	(95)	(47)	(20)		(5)	(0,2)
3/8"	0.39	0.47	1.77	0.89	3.76	1.86	0.79		9.3	0.3
DN10	(10)	(12)	(45)	(22)	(95)	(47)	(20)		(8)	(0,1)
1/2"	0.59	0.61	2.32	1.16	3.76	2.03	0.98		45	0.5
DN15	(15)	(15)	(59)	(29)	(95)	(51)	(25)		(39)	(0,2)
3/4"	0.79	0.67	2.52	1.26	4.57	2.33	1.22		65	0.8
DN20	(20)	(17)	(64)	(32)	(116)	(59)	(31)		(56)	(0,4)
1"	0.98	0.83	3.19	1.59	4.57	2.48	1.57		90	1.4
DN25	(25)	(21)	(81)	(40)	(116)	(63)	(40)		(78)	(0,6)

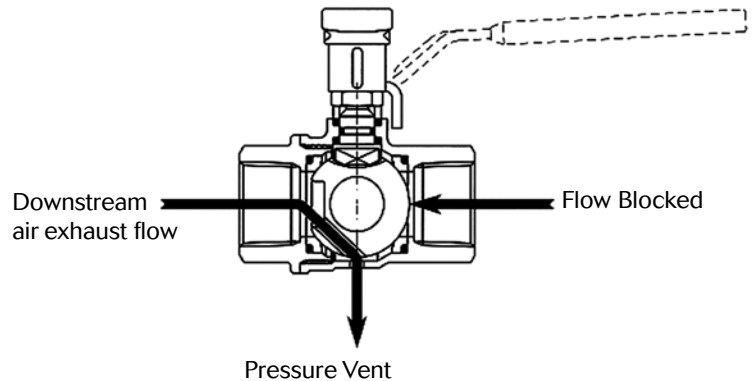
# Marwin Valve

## 667FTTS Full Port Brass Ball Valve – Safety Vent

### Valve Open



### Valve Closed



The vented ball allows downstream pressure to bleed off the line through the valve body, with the valve remaining tight and the upstream seat continuing to hold line pressure.

Valve is lockable in the closed position only according to Par. 1910.147 safety OSHA (USA) requirements.

---

## Other Marwin Brass Ball Valves

### Two Piece

- 633FTRS-LD – Full Port 600 CWP Brass 2-Piece Ball Valve, Brass Body / 316SS Trim, RPTFE Seats, Threaded Ends, Lever Operated with Locking Device, Sizes 1/2" – 2" (Consult Factory)
- 633FTRS-DM – Full Port 600 CWP Brass 2-Piece Ball Valve, Brass Body / 316SS Trim, RPTFE Seats, Threaded Ends, Direct Mount, Sizes 1/2" - 2" (Consult Factory)

### Three Piece

- 4633RTTS – Standard Port 600 CWP Brass 3-Piece Swing-out Ball Valve, Brass Body / 316SS Trim, Threaded Ends, Sizes 1/4" - 2" (See Bulletin)
- 4633FTTS – Full Port 600 CWP Brass 3-Piece Swing-out Ball Valve, Brass Body / 316SS Trim, Threaded Ends, Sizes 1/4" - 2" (See Bulletin)
- 4666RTTS – Standard Port 600 CWP Brass 3-Piece Swing-out Ball Valve, Brass Body and Trim, Threaded Ends, Sizes 1-1/4" - 2" (See Bulletin)
- 4666FTTS – Full Port 600 CWP Brass 3-Piece Swing-out Ball Valve, Brass Body and Trim, Threaded Ends, Sizes 1/4" - 2" (See Bulletin)

### Three Way

- 3T3100FTTS – Full Port 300 CWP Brass 3-Way Bottom Entry Ball Valve, T-Port Transflow Mixing, Threaded Ends, Lever Operated, Sizes 1/4" - 3" (See Bulletin)
- 3L3200FTTS – Full Port 300 CWP Brass 3-Way Bottom Entry Ball Valve, L-Port Non-Transport Diverting, Threaded Ends, Lever Operated Sizes 1/4" - 3" (See Bulletin)
- 3T3300RTTS – Standard Port 400 CWP Brass 3-Way Side Entry Ball Valve, T-Port, Lever Operated, ISO Mounting Pad, Threaded Ends, Sizes 1/4" - 2" (See Bulletin)
- 3L3400RTTS – Standard Port 400 CWP Brass 3-Way Side Entry Ball Valve, L-Port, Lever Operated, ISO Mounting Pad, Threaded Ends, Sizes 1/4" - 2" (See Bulletin)

# Marwin Valve 600 Series – Ordering Schematic

Series	Body	Ball	Stem	Port	Packing	Seats	Ends	–	Size	–	Feature
633FTRS-100-LD	6	3	3	F	T	R	S				LD
633FTRS-100-DM	6	3	3	F	T	R	S				DM
666RTTS-100	6	6	6	R	T	T	S				
666FTTS-100	6	6	6	F	T	T	S				
666FTTW-100	6	6	6	F	T	T	W				
666FTTS-100-DM	6	6	6	F	T	T	S				DM
667FTTS-100	6	6	6	F	T	T	S				

1	Body
6	Brass

2	Ball
3	Stainless Steel
6	Brass

3	Stem
3	Stainless Steel
6	Brass
7	Brass with Safety Vent

4	Port
F	Full Port
R	Standard Port

5	Packing
T	PTFE

6	Seats
R	RPTFE
T	PTFE

7	Ends
S	FNPT
W	Solder

8	*Size
025	1/4"
038	3/8"
050	1/2"
075	3/4"
100	1"
125	1-1/4"
150	1-1/2"
200	2"
250	2-1/2"
300	3"
400	4"

\* Check size availability on bulletin page

9	Feature
DM	Direct Mount
LD	Locking Device



**Marwin Valve, a division of Richards Industries**  
3170 Wasson Road • Cincinnati, OH 45209  
513.533.7340 • 800.628.2583 • 513.533.7343 (fax)  
marwin@richardsind.com • www.marwinvalve.com