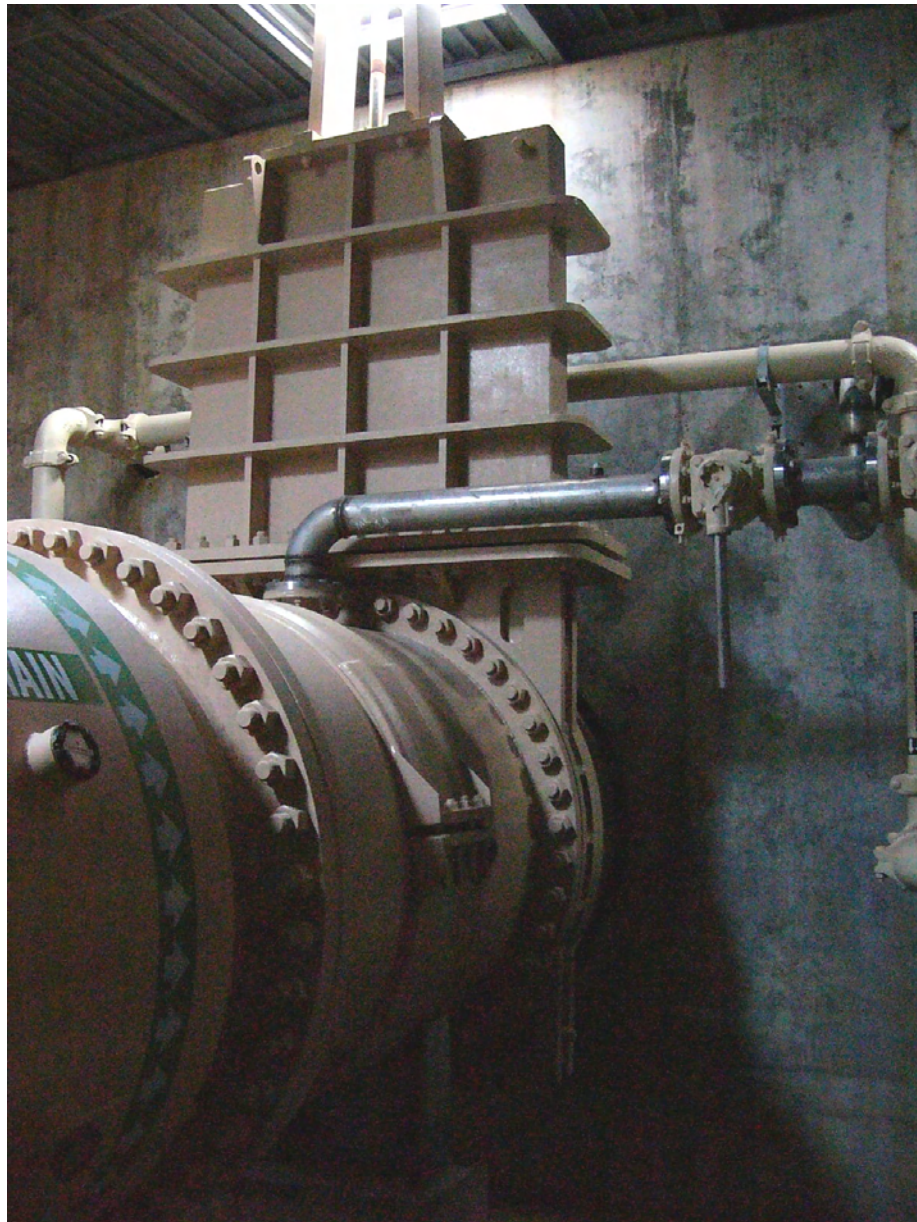




# A-C Valve Inc.

Serving the world with  
**CUSTOM FABRICATED  
KNIFE GATE VALVES**





# A-C Valve Inc.

## CUSTOM FABRICATION

A-C Valve Inc. can design and manufacture virtually any configuration of **fabricated knife gate valve** or **slide gate valve** that you might require. Our factory located in Portland Oregon is staffed with some of the **most knowledgeable people** in the knife gate valve industry. A-C's engineering and manufacturing staff work hand and hand to insure you with the highest quality possible without having to sacrifice a competitive price or a reasonable ship date. We at A-C pride ourselves in our capabilities and offer our product knowledge and experience to you for **Custom Fabricated Knife Gate Valves**.

A-C has **experienced fabricators** that are **certified to weld** many materials and alloys including;

- All 300 series stainless steel
- Alloy 20
- 254 SMO
- Hastelloy
- Titanium
- Monel
- Inconell
- And many more

**Please take a moment to look through the pictures featured in this pamphlet to get an idea of what we can build for you.**

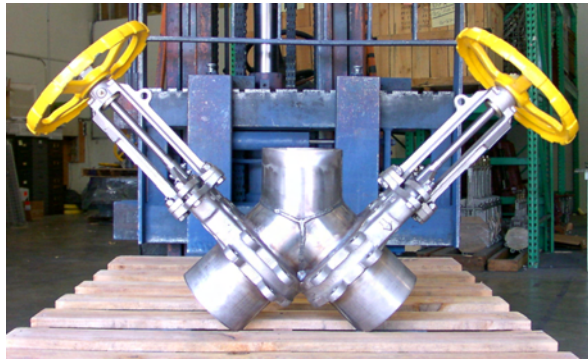
Is it a **large diameter knife gate valve** you are looking for? We offer **resilient seats, metal to metal seats, bonneted, or bonnetless knife gate valves** in sizes through and above **96"**. These valves are available in **50, 125, and 150 PSI CWP** pressure ratings. Other pressure ratings are available on request.



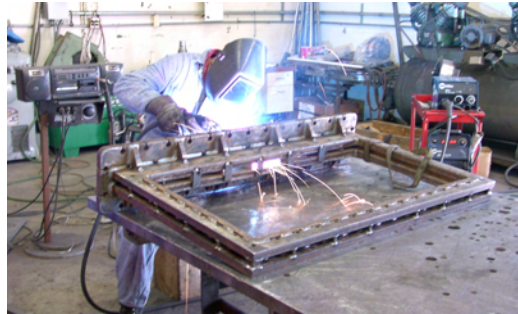
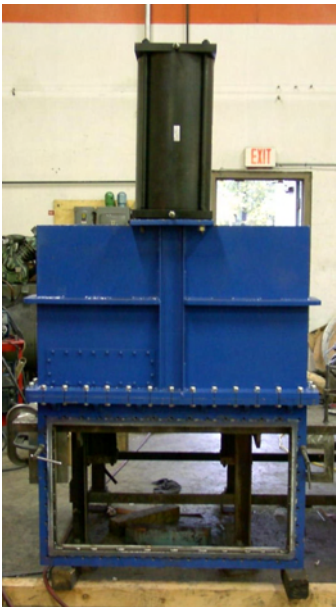
96" BONNETED KNIFE GATE VALVE



The A-C **Fig 92 slide gate valve** is the perfect choice for dense or abrasive media, both wet or dry. The **Fig 92's** body cavity, seat configuration, and gate are designed to provide shut off capability in thick media such as pulp stock, slurries, or with solid media such as pellets or powders. **Hardsurfacing** is available for seat, gate, and gate guides as well as inlet and outlet ports to provide longer life in tough abrasive applications.

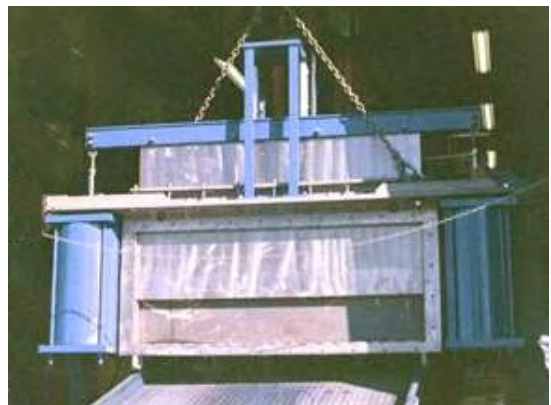


Above is a **Custom Fabricated 6" Diverter Valve** using two cast stainless steel **Fig 76's** integrated into the formed Y. The result is user friendly yet bullet proof.



Completely **custom designed** and **Custom Fabricated Rectangular Fig 76** (above & left), this valve is **bonneted** and equipped with a double acting air cylinder. This is yet another example of how A-C can suit **your custom valve needs**.

Your **custom specification** results in our **custom engineering**. The end result is a **Custom Fabricated Knife Gate Valve** that you can depend on for many years of quality service. Pictured to the right is a **24" by 60" Dual Cylinder Rectangular Fig.77** that is fabricated out of all 316 stainless steel with a Teflon seat.



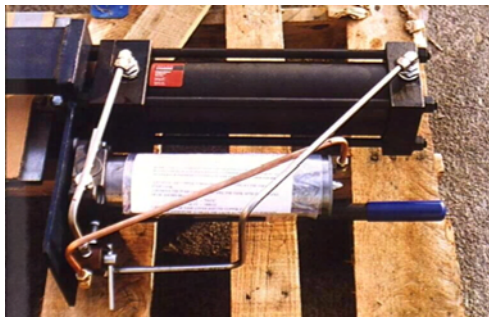
To the left, a **500 PSI 2 piece Split Body Fig 77**. This valve is constructed of all 316 Stainless Steel and has a **one piece fully replaceable resilient seat**. The valve is capable of **bubble tight bi-directional shut off**. The valve is also equipped with a 4:1 bevel gear operator. (Not shown)

# Custom Actuation

When custom actuation is required A-C has the **engineering and the manufacturing experience** to achieve the **highest customer**



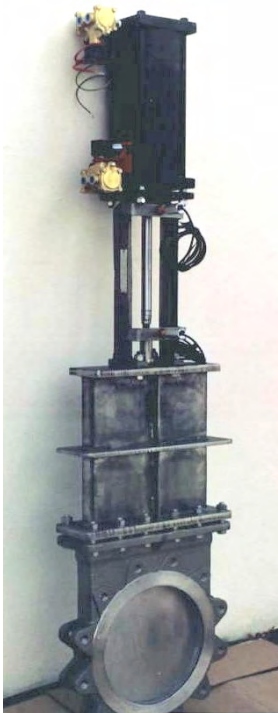
**6" Fig. 76 with extended stem.**



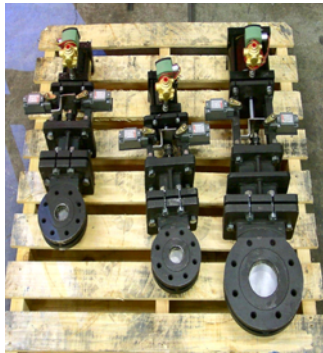
Pictured above is an example of a **hydraulic cylinder** that is actuated with a **hand pump**. This type of application eliminates the need for a remote motor and pump as well as job sight plumbing.



**6" Fig 76 KGV, cast stainless steel with an electric motor operator.**



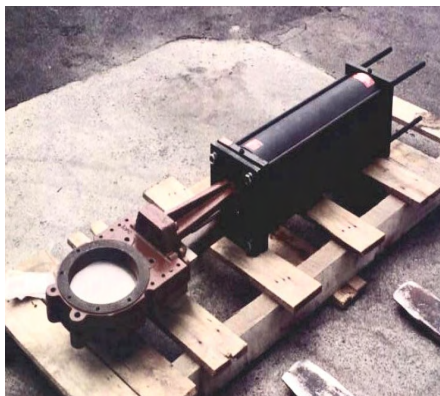
**12" Fig 176 with double acting air cylinder, dual 3-way control valves and proximity switches.**



Small diameter **fully fabricated Fig 176's** with **air cylinders, open and closed limit switches, and solenoid control valve.**



**6" Fig 76 with air cylinder and positioner.**



**20" Fig 176 KGV with electric motors operators and handwheel override.** Pictured here installed in a pumping station.

**8" Fig 60 knife gate valve equipped with an air to open, spring to close cylinder.**



# INDUSTRIES & APPLICATIONS

**PULP and PAPER:** High density stock cleaner, Cyclone trash recovery; Refiner manifold isolation and transfer lines; Green liquor transfer lines; Lime mud to washer; Chlorinated stock transfer; White liquor tank discharge; Black liquor transfer lines; Brown stock pump isolation; Pulp stock to re-pulpers; Groundwood slurry pump isolation; Mill water pump isolation; Flyash pump isolation; Bleached stock high density isolation; Wood yard river water pump isolation; Paper machine stock feed; primary paper stock grit pot service; Dry lime pneumatic conveyor; Recovery gas vent isolation; Blow down tank isolation.

**WASTE WATER TREATMENT:** Lift stations, Pump isolation, Oily sludge slurry pump isolation, dry sludge pneumatic conveying, Chlorine contact discharge, Sludge lines, River water intake, Pump discharge, Pond diversion, Pump stations, Ocean/River outfalls, Hot tapping, Pond isolation, Irrigation, Force main diversion, Force main isolation, Wet well isolation, Dewatered sludge transfer, Sludge hoppers, Grit removal chambers, Effluent, Filtration process, Chemical batching tanks, Lagoon transfer, Dewatering systems, Scum basins, Activated sludge, Influent.

**POWER GENERATION:** Scrubber area pump isolation; River water de-sanding circuit; Limestone slurry pump isolation; Limestone grinding circuit isolation; Lime and limestone injection flow control; pH balance flow control; Fly ash slurry pump isolation; Bottom ash de-watering circuit, sluice line; Coal slurry pump isolation; Boiler washdown circuit.

**MINING:** Tailing distribution; hydro-cyclone and pump isolation; thickener overflow shut off; Thickener underflow control; Storage tank dump; Flotation feed shut off; Flotation column level control; Filter tank dump; Leach circuits.

**FOOD PROCESSING:** Pork and Poultry processing; Mill waste water pump suction and discharge lines; Molasses centrifugal pump isolation and pan cover; Soy bean oil transfer line.

**CHEMICAL & FERTILIZERS:** Gypsum pond fill; Soda ash slurry pump isolation and tank control; Phosphoric acid attack tank, fine feed, transfer lines; Phosphate ore charge pump, hydrosizer underflow, column head feed, tailings, hot pit cooling water.

**CEMENT:** Cement slurry pump suction and discharge lines, and tank recirculation; Cement slurry routing; Dry cement pneumatic conveying; Bin control.

**COAL:** Coal slurry heavy medium circuit isolation; Coal slurry transfer line; Tank farm.

**SAND:** Sand slurry pump isolation; Silica sand cyclone and pump isolation.

**BEVERAGES:** Wine crush tank outlet, Brewery effluent discharge, Bottle washing machine outlet, Musk lines.

**INDUSTRIAL:** Process water transfer line, pump & cyclone isolation; Metals reclaiming; Slag Ash Isolation.

**HYDRO POWER:** Isolation valve for fixed cone valves and sleeve valves.