



TITAN FLOW CONTROL, INC.

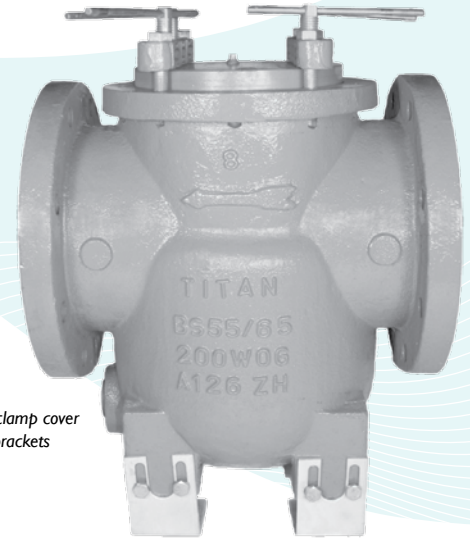
## SIMPLEX BASKET STRAINER ♦ FLANGED ENDS - FLAT FACE

### ANSI CLASS 125 ♦ CAST IRON ♦ CLAMPED & BOLTED COVER

MODELS: BS 55-CI  
(CLAMPED COVER)

BS 65-CI  
(BOLTED COVER)

SIZES: 2" ~ 12"



BS 55-CI is shown with clamp cover and removable leg brackets

## FEATURES

- ♦ **VERSATILE - HIGH QUALITY DESIGN**  
THIS BASKET STRAINER IS AVAILABLE WITH EITHER A FULL RATED BOLTED COVER (BS65) OR CLAMPED COVER (BS55). BOTH MODELS ARE EPOXY PAINTED AND COME STANDARD WITH A PLUGGED BOTTOM DRAIN CONNECTION. LARGER SIZES (8" ~ 12") ALSO FEATURE REMOVABLE/ADJUSTABLE LEG BRACKETS.
- ♦ **MINIMAL PRESSURE LOSS**  
PRESSURE LOSS IS MINIMIZED BY PROVIDING A SLANTED STRAINING ELEMENT DESIGN, A STRAIGHT-THROUGH FLOW PATH, AND A LARGE OPEN AREA RATIO. INLET AND OUTLET BOSSES ARE PROVIDED TO FACILITATE THE MOUNTING OF PRESSURE GAUGES TO MONITOR PRESSURE LOSS.
- ♦ **LARGE STRAINING CAPACITY**  
WITH ITS LARGE BODY AND SIZEABLE STRAINING ELEMENT, THIS BASKET STRAINER HAS THE ABILITY TO STORE LARGE QUANTITIES OF DEBRIS WITHOUT AFFECTING PRESSURE LOSS - THUS MAXIMIZING TIME BETWEEN SERVICING.
- ♦ **NUMEROUS STRAINING ELEMENT OPTIONS**  
STRAINING ELEMENTS ARE AVAILABLE IN A VARIETY OF PERFORATIONS, MESHES, AND MATERIALS. SPECIAL DESIGNS ARE ALSO AVAILABLE INCLUDING MAGNETIC, WEDGE WIRE, DRILLED PERFORATIONS, AND PLEATED STRAINING ELEMENTS. THE STANDARD MATERIAL FOR STRAINING ELEMENTS IS TYPE 304 STAINLESS STEEL.
- ♦ **SELF-CLEANING OPTION**  
UTILIZING A MODIFIED STRAINING ELEMENT, THE BOTTOM DRAIN CAN BE FITTED WITH A TITAN FCI BALL VALVE TO ALLOW FOR THE AUTOMATIC CLEANING OR FLUSHING OF THE STRAINING ELEMENT WHILE KEEPING THE PIPELINE IN SERVICE.

## TECHNICAL

### PRESSURE/TEMPERATURE RATING CAST IRON ASTM A126 GR. B - CLASS 125

BS 55-CI (Clamped Cover)<sup>(1)</sup>  
WOG (Non-shock): 200 PSI @ 100 °F  
Saturated Steam: Not Recommended  
Maximum Liquid: Not Recommended

BS 65-CI (Bolted Cover)  
WOG (Non-shock): 200 PSI @ 150 °F  
Saturated Steam: 125 PSI @ 353 °F  
Maximum Liquid: 125 PSI @ 450 °F

I. Clamped cover is not recommended for steam service. It is designed as follows:

Sizes 2" ~ 4" are designed with (1) Tee Bolt  
Size 6" is designed with (2) Tee Bolts  
Sizes 8" ~ 12" are designed with (4) Tee Bolts

## APPLICATIONS

**MARKETS:** WATER & WASTEWATER, PULP & PAPER, CHEMICAL & PETROCHEMICAL, PETROLEUM, OIL & GAS, TRANSPORTATION, MARINE INDUSTRY, AND FOOD INDUSTRY

**GENERAL APPLICATION:** SIMPLEX BASKET STRAINERS ARE INSTALLED INTO A PIPELINE SYSTEM TO REMOVE UNWANTED DEBRIS FROM THE PIPELINE FLOW. BASKET STRAINERS ARE COMMONLY USED IN HORIZONTAL PIPELINES WHERE DEBRIS LOADING IS HIGH AND THE COLLECTION OF SOLIDS IS REQUIRED. STRAINING IS ACCOMPLISHED VIA A PERFORATED OR MESH LINED STRAINING ELEMENT, INTERNAL TO THE BASKET STRAINER. IN GENERAL, THE SIZE OF THE PERFORATION OR MESH SHOULD BE SLIGHTLY SMALLER THAN THE SMALLEST DEBRIS PARTICLE TO BE REMOVED. IT IS IMPORTANT TO NOTE THAT THE CORRECT SIZE OF A BASKET STRAINER IS DETERMINED BY ITS JOB FUNCTION, NOT BY THE SIZE OF THE PIPELINE.

*The above data represents common market and service applications. No representation or guarantee, expressed or implied, is given due to the numerous variations of concentrations, temperatures and flow conditions that may occur during actual service.*

# TITAN FLOW CONTROL, INC.

YOUR PIPELINE TO THE FUTURE!

Tel: 910-735-0000 ♦ Fax: 910-738-3848 ♦ titan@titanfci.com ♦ www.titanfci.com  
290 Corporate Drive ♦ PO Box 7408 ♦ Lumberton, NC 28358



**TITAN FLOW CONTROL, Inc.**  
 290 Corporate Drive  
 Lumberton, NC 28358  
 Tel: 910.735.0000  
 E-mail: titan@titanfci.com  
 Web: www.titanfci.com  
 Fax: 910.738.3848

**SIMPLEX BASKET STRAINER**

**BS 55-CI - (Clamped Cover)**  
**BS 65-CI - (Bolted Cover)**

**Flanged Ends • Flat Face • Cast Iron Body**

**ANSI**  
**Class 125**

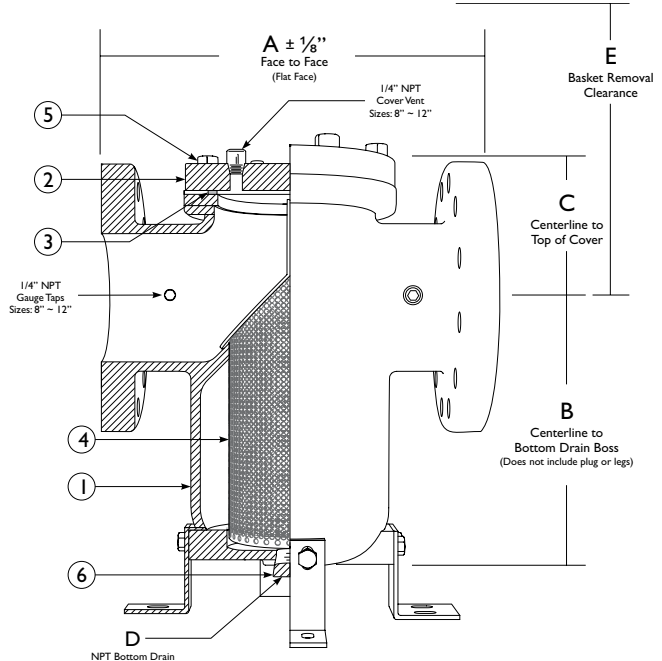
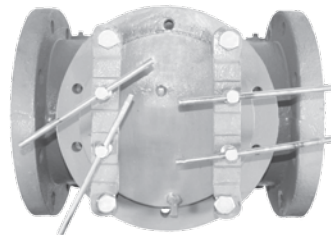
**BILL OF MATERIALS (1)**

No.	PART	BS 65-CI	BS 55-CI
1	Body (2)	Cast Iron ASTM A126 Gr. B	
2	Cover	Cast Iron ASTM A126 Gr. B	
3	Cover Gasket (3)	Non-Asbestos	Buna-N O-Ring
4	Straining Element (3)	Type 304 Stainless Steel	
5	Cap Screws	Carbon Steel	
6	Plugs (Boss/Drain)	Cast Iron	

1. Equivalent or better materials may be substituted at the manufacturer's discretion.
2. Cast Iron bodies are epoxy painted.
3. Denotes recommended spare parts.

**Clamped Cover Design Notes:**

Sizes 2" ~ 4" are designed with (1) Tee Bolt  
 Size 6" is designed with (2) Tee Bolts  
 Sizes 8" ~ 12" are designed with (4) Tee Bolts



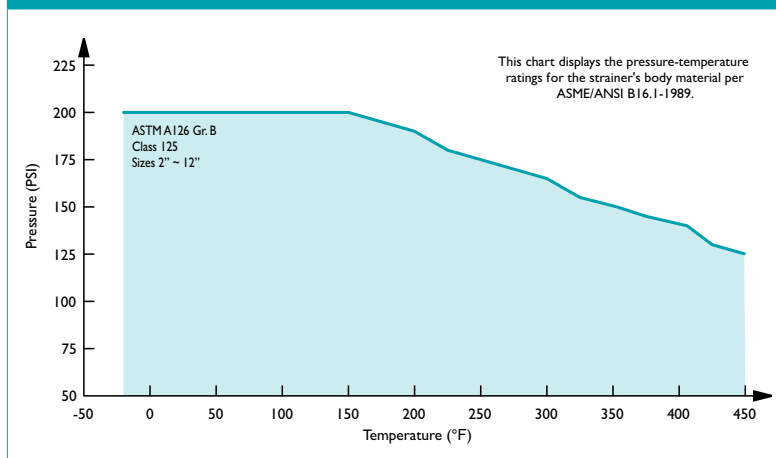
**DIMENSIONS AND PERFORMANCE DATA (1)**

SIZE	in	2	2 1/2	3	4	5	6	8	10	12
	mm	50	65	80	100	125	150	200	250	300
<b>A DIMENSION (2)</b> FACE TO FACE	in	8.625	7.562	8.75	11.25	12.25	14.00	17.125	22.00	25.25
	mm	220	193	223	286	311	356	435	559	642
<b>B DIMENSION (3)</b> CTR. LINE TO BOTTOM	in	5.875	5.438	5.25	7.875	8.75	8.00	11.00	16.00	23.75
	mm	150	139	134	201	223	204	279	407	604
<b>C DIMENSION</b> CTR. LINE TO TOP	in	4.375	3.75	5.125	5.375	5.00	7.00	8.00	9.25	11.625
	mm	112	96	131	137	127	178	203	235	296
<b>D DIMENSION</b> NPT BLOW-OFF	in	1/2	3/4	3/4	1	1	1 1/4	1 1/2	1 1/2	2
	mm	15	20	20	25	25	32	40	40	50
<b>E DIMENSION</b> SCREEN REMOVAL	in	10.875	10.875	11.25	15.50	15.50	18.25	23.375	29.00	37.50
	mm	277	277	286	394	394	464	594	737	953
<b>ASSEMBLED WEIGHT (BS65)</b>	lb	27.0	30.0	40.0	64.0	84.0	142.0	244.0	416.0	732.0
	kg	12.2	13.6	18.1	29.0	38.1	64.4	110.6	188.5	332.0
<b>ASSEMBLED WEIGHT (BS55)</b>	lb	28.4	31.5	42.0	62.0	84.0	142.0	256.2	436.8	732.0
	kg	12.8	14.3	19.0	28.1	38.1	64.4	116.1	197.9	332.0
<b>Flow Coefficient</b>	$C_v$	43	86	135	290	490	780	1600	3250	5200

**Additional Design & Technical Notes:**

1. Dimensions, weights, and flow coefficients are provided for reference only. When required request certified drawings.
2. Face to face values have a tolerance of  $\pm 0.06$  in ( $\pm 2.0$  mm) for sizes 10" and lower and a tolerance of  $\pm 0.12$  in ( $\pm 3.0$  mm) for sizes 12" and larger.
3. Removable/adjustable leg brackets are standard on sizes 8" through 12". Centerline to bottom dimension does not include removable legs. On these three sizes (8", 10", 12"), the legs can extend approximately three inches beyond the bottom boss drain.
4. Inlet and outlet bosses are standard on sizes 8" through 12".
5. Inlet and outlet 1/4" NPT gauge taps with plugs are standard on sizes 8" through 12".
6. 1/4" cover vent taps with plugs are standard on sizes 8" through 12".
7. Straining element features a bow shaped handle that presses against the cover to help ensure the straining element remains securely seated during operation.

**PRESSURE - TEMPERATURE RATINGS**



**REFERENCED STANDARDS & CODES**

CODE	DESCRIPTION
ASME/ANSI B16.1	Cast Iron Pipe Flanges and Flanged Fittings

**PRESSURE - TEMPERATURE RATING**

ANSI CLASS 125	BS 65-CI	BS 55-CI
WOG (Non-shock)	200 PSI @ 150 °F	200 PSI @ 100 °F
Saturated Steam	125 PSI @ 353 °F	Not Recommended
Max Liquid	125 PSI @ 450 °F	Not Recommended

**STANDARD SCREEN SELECTIONS**

Size	Liquid	Open Area	Steam	Open Area
2" ~ 4"	1/16 (.0625)	41%	3/64 (.045)	36%
5" ~ 12"	1/8 (.125)	40%	3/64 (.045) (1)	36%

1. For 10" and above, consult factory on screen selections for steam.

Titan FCI makes every effort to ensure the information presented on our literature accurately reflects exact product specifications. However, as product changes occur, there may be short-term differences between actual product specifications and the information contained within our literature. Titan FCI reserves the right to make design and specification changes to improve our products without prior notification. When required, request certified drawings.